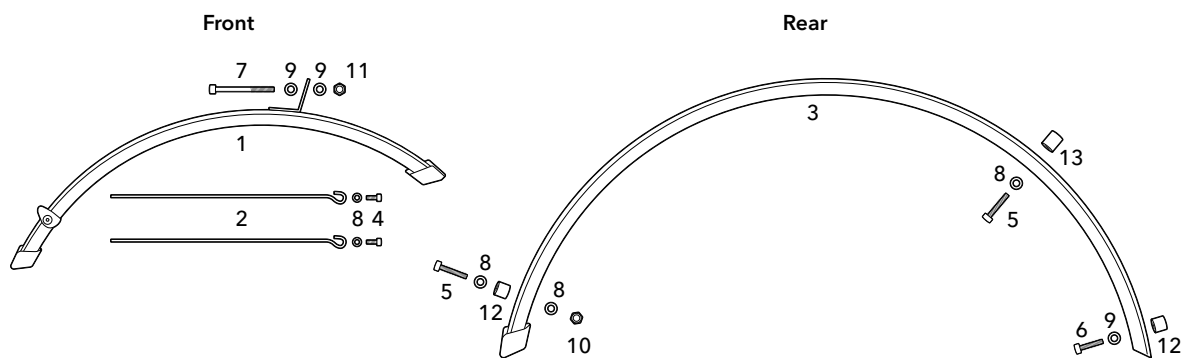


▲ The Metro Transit Rack is required for installing MTR Fenders on the BYB.

▲ Do not attempt to install this component without proper tools, training, or know-how. If you are unsure how to service or install this component, please bring it along with the bike to a trained bicycle technician.

What's Included

1. Front Fender x 1
2. Fender Stay x 2
3. Rear Fender x 1
4. M5 x 10 Screw x 2
5. M5 x 25 Screw x 2
6. M6 x 20 Screw x 1
7. M6 x 60 Screw x 1
8. M5 Washer x 5
9. M6 Washer x 3
10. M5 Nut x 1
11. M6 Nut x 1
12. Bushing 10 mm x 2
13. Bushing 15 mm x 1

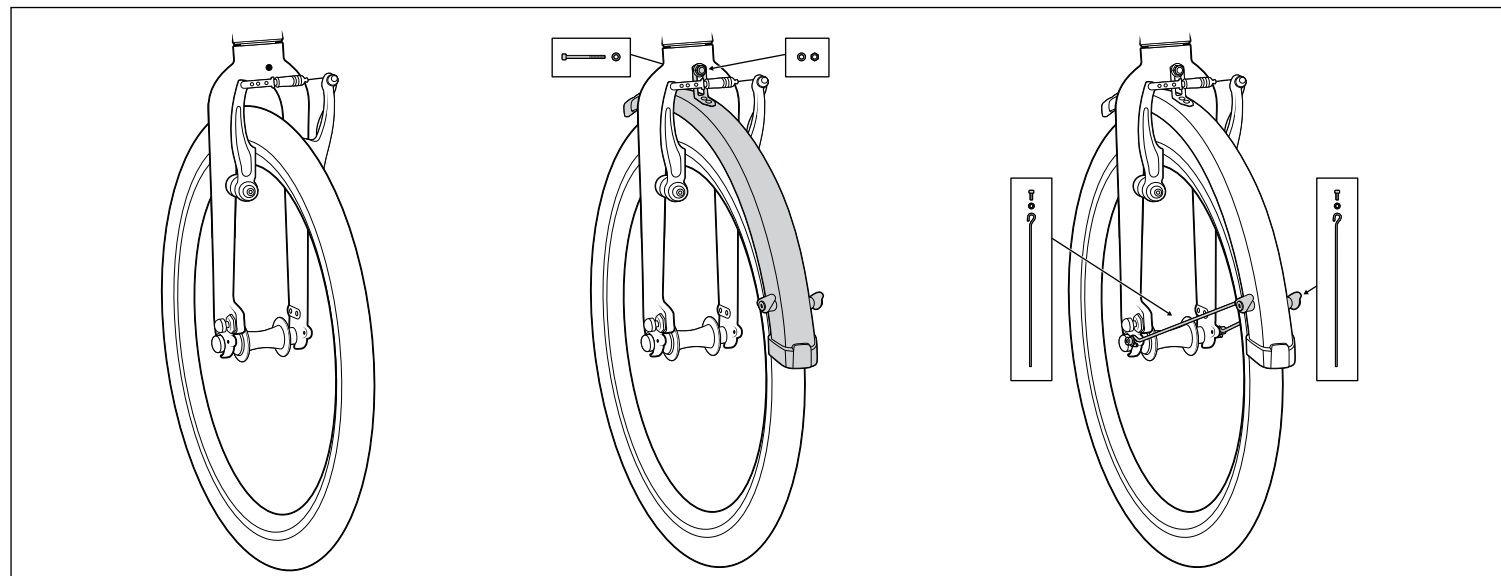


Installation

Tools Required (not included)

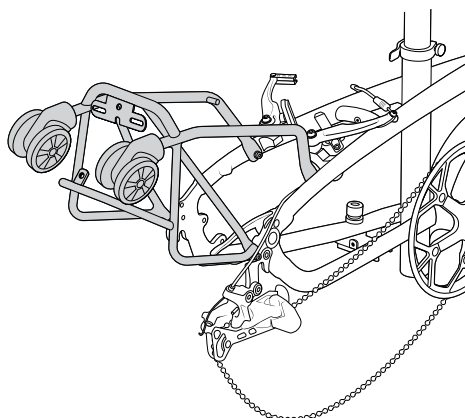
- 3 mm Allen Wrench
- 4 mm Allen Wrench
- 5 mm Allen Wrench
- 8 mm Wrench
- 10 mm Wrench
- Drilling tools

1. Install the Front Fender

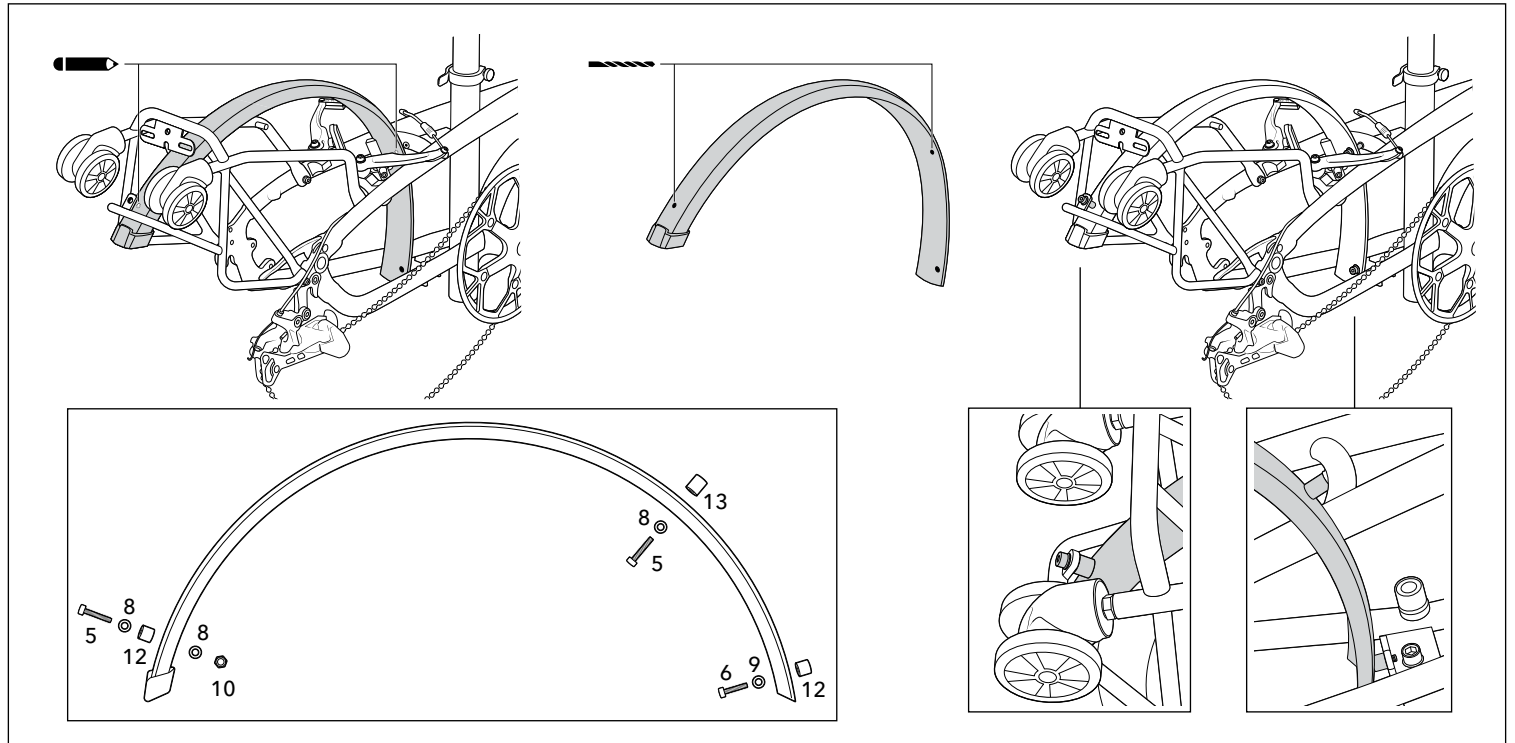


2. Install Metro Transit Rack

▲ Metro Transit Rack is sold separately



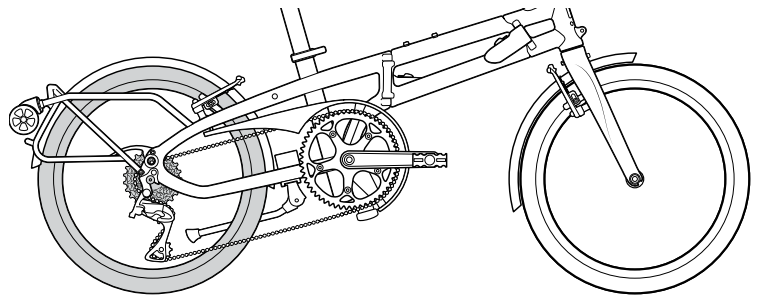
3. Install the Rear Fender



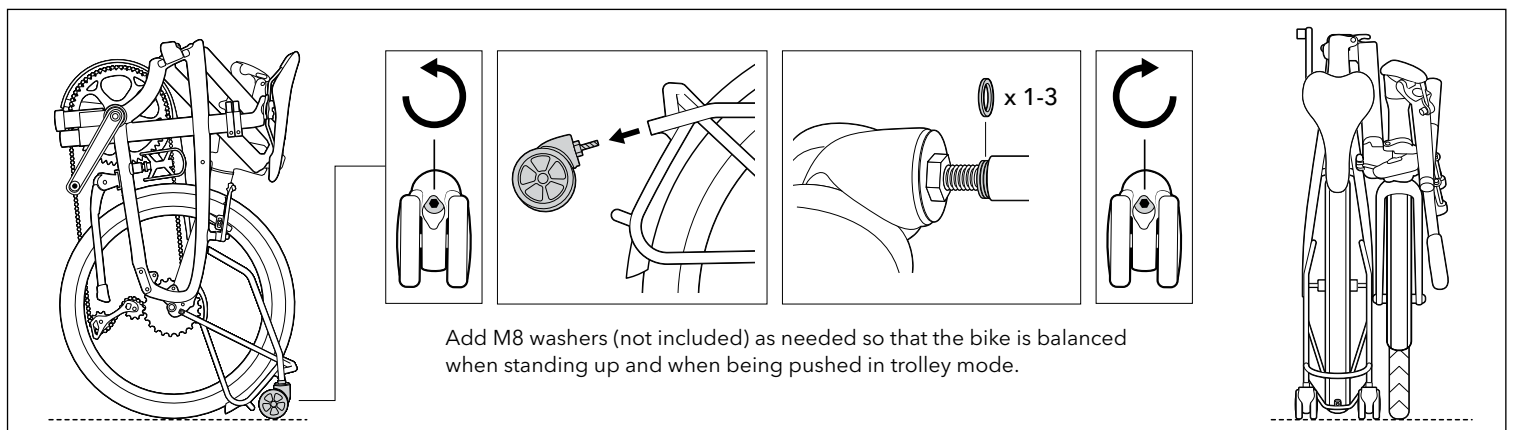
4. Reinstall the rear wheel.

⚠ Follow [BYB Hub Axle manual](#) to tighten the Axle properly

⚠ After installation, please check to ensure Gear Shifting works properly.



Standing Angle Adjustment



LIMITED PRODUCT WARRANTY INFORMATION: This Product comes with a ONE (1) YEAR Limited Warranty from the date of retail purchase by the original end-user. If a material or workmanship defect arises and a valid claim is received within the Warranty Period, this Product will be replaced. Mobility Holdings cannot be held liable for damages to personal property due to misuse or improper care and maintenance. This Product Warranty does not, under any circumstance, cover the replacement or cost of any third party product used with or connected to the Product.

Tern, the Tern Werd (logotype), and the Tern Berd (device) used alone or in combination are trade names, trade devices or registered trademarks of Mobility Holdings, Ltd.